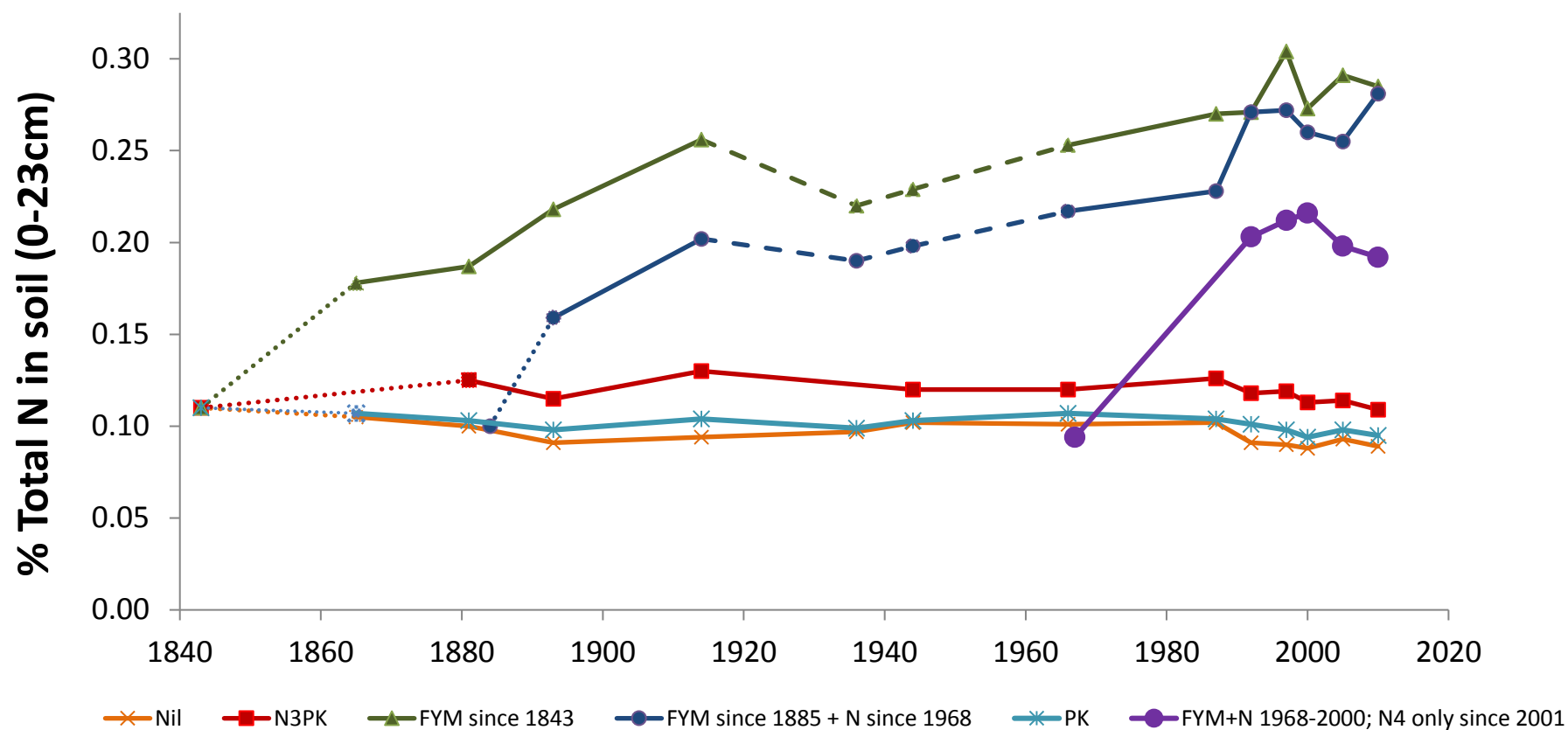


Broadbalk. Long-term changes in soil nitrogen concentration



Continuous wheat sections only. Starting values for all treatments in 1843 and the later FYM treatment in 1884 were estimated (.....). The sections were regularly followed from 1926 to 1967, FYM was not applied in fallow years (- - -). Updated from Rothamsted Research, 2006, with data from AJ Macdonald (personal communication, 2018).

